

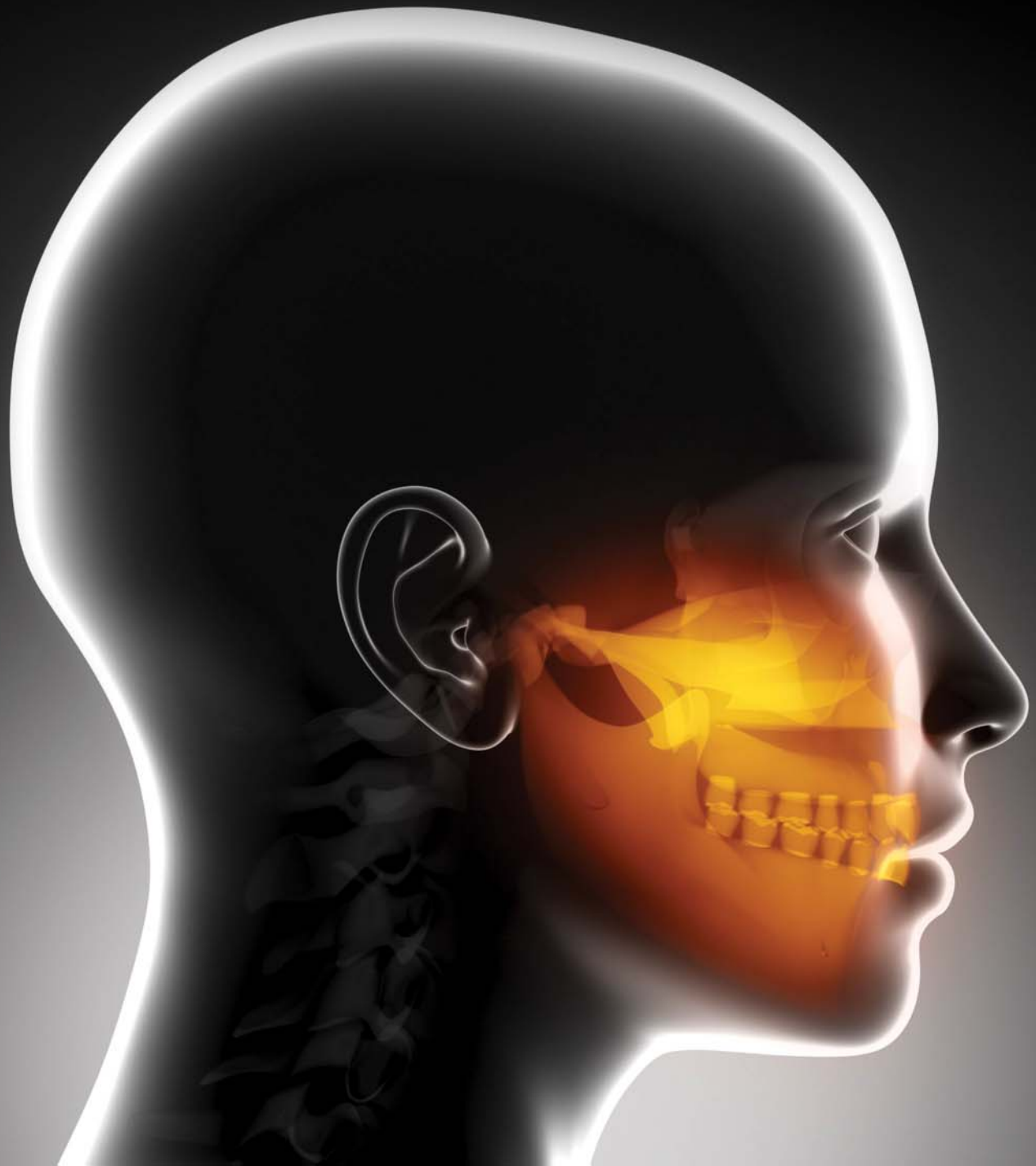
Oral Maxillofacial

Retractors

Trauma Kit Instruments

Cleft Lip & Palate Instruments

Impaction Kit Instruments



BONE HOLDING, RETRACTORS & OTHER INSTRUMENTS

Asch Nasal Septum Forcep



Large ANS

Walsham Nasal Septum Forcep



Left WNSL

Right WNSR

Rowe Maxillary Disimpaction Forcep



Left RMDL

Right RMDR

Nasal Chisel with Guard



Left NCGL

Right NCGR

Ferguson Mouth Gag



Large FMGA

Small FMGC

Hayton William Forcep



Left HWL

Right HWR

BONE HOLDING, RETRACTORS
& OTHER INSTRUMENTS



Bone Holding Forcep (Mandible)
BHM



Channel Retractor Regular
CHR



Kilner Retractor C Shape
KRC



Chin Retractor
CR



Pterigoid Chisel
PC



Nasal Septum
Osteome with
Guard U Shape
NSOU



Bristow Elevator
BE



Bone Elevator
Hohman Type
BEH



Micro Miller Bone
File Straight
BFMS



Barsky Pharyngeal
Flap Elevator
BPF

BASIC BONE PLATING INSTRUMENTS



Modelling Lever
ML



Plier
BPP



Bone Cutting Forcep Single Action
RBC



Zygomatic Bone Awl
ZBA

Suggested Trio



Suggested Trio



Wire Twister
WTL



Bone Holding Forcep Pointed
BHP

Ordinary Screw Driver
OSD1.5
OSD2.0
OSD2.5

Self Holding Screw Driver
SSH1.5
SSH2.0
SSH2.5

Suggested Trio



2 Holes
P2H1.5SS
P2H2.0SS
P2H2.5SS



Orbital 4 Holes
P4HO1.5SS
P4HO2.0SS



4 Holes
P4H1.5SS
P4H2.0SS
P4H2.5SS



Left 4 Holes
P4HLL1.5SS
P4HLL2.0SS



Screw
S1.5SS
S2.0SS
S2.5SS



L SHAPE

Right 4 Holes
P4HLR1.5SS
P4HLR2.0SS



16 Holes
P16H1.5SS
P16H2.0SS
P16H2.5SS



Trauma Kit
TRAUMA

SS Drill Bite for Micromotor
DSS1.5
DSS2.0
DSS2.5

CLEFT LIP & PALATE INSTRUMENTS



Palate Dissector Right
CPDR



Palate Dissector Left
CPDL



Cleft Palate
Raspatory Up
CPRU



Cleft Palate
Raspatory Down
CPRD



Senn - Miller Retractor (Kilner)
TRSM1



McIndoe Cleft Palate Raspatory
MCPR



Cleft Palate Elevator
CPE2



Spoon Shape Elevator
SSE



Cleft Palate Elevator
CPE1

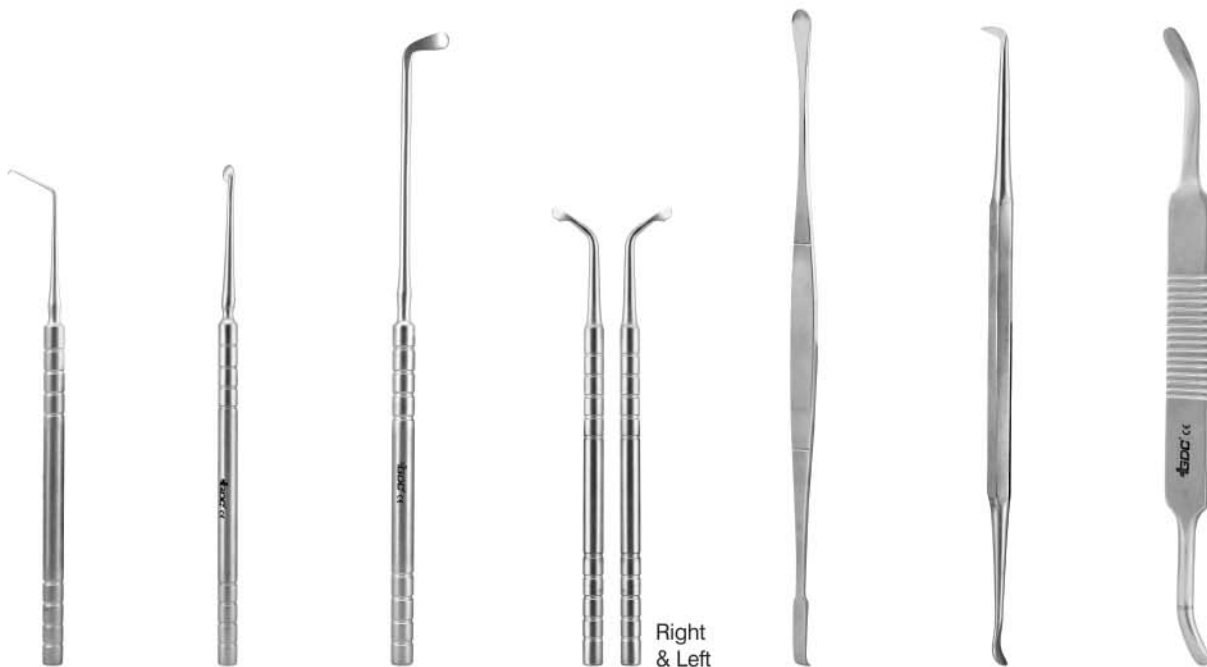


Miller Bone File Curved
BF52

CLEFT LIP & PALATE INSTRUMENTS



Dingman Mouth Gag with 4 Baldes
DMG



Cleft Palate
Down Hook
CPHD

Cleft Knife
Triangle
CPKT

Cronin Cleft
Palate Elevator
CCP

Cleft Palate Raspatory
French Type
CPRFL
CPRFR

Howarth
PH

Michel Trimmer
TM

Cleft Palate
Raspatory Barsey
CPRB

IMPACTION KIT



Mouth Props with Chain (Set of 3)
MP3



IMPACTION



London Hospital
E20H

Coupland
EA1C

Chisel 7.5mm
OSS6520S

Cryer
E31
E32

Root Tip Pick Heidbrink
EHB2
EHB3

Warwick James
EWJS



Blumenthal
RBL

Heath Suture
Cutting 15.5cm
S25

Crile Straight 16.0cm
HRPS

Mayo-Hegar
Straight 16.0cm
NHMH

Backhaus 13.0cm
TC5

Adson 1x2 15.0cm
TP46



Fork
TRA2

Scalpel Handle
Straight 14.5cm
10-130-5EM

Curette Lucas
CL87
#3

Miller 52
BF52

Molt-9 Large
P9
#3

Frazier Suction
ASPFR14

Howarth
PH



LUXATIP



GDC Luxatip Luxation Instrument

Over recent years, there has been an increased demand for reduced trauma during extraction procedures. The use of elevators has become widespread for the loosening of teeth before the application of forceps. GDC Luxation instruments tips are more finely tapered than elevators tips. Their characteristics are a combination of a Periostome and an elevator. The sharp tip enables more efficient cutting of the periodontal ligament, whilst the tapering shaft assists with controlled expansion of the bony socket. The extraction operation may be performed with the minimum amount of tissue damage. Healing is therefore quicker and the operation is less distressing for the patient and surgical team alike.

The GDC Luxatip Kit comprises of seven Luxation instruments, a straight, curved, inverted curved & contra blade version in Three different widths.

Also available in dual edge blades

- L-2S Straight Blade- Green-2 mm- Apical and/or Interproximal
- L-3C Curved Blade- Black- 3 mm General use/Starter
- L-3S Straight Blade- Grey- 3 mm Interproximal
- L-3CA Contra Angle- Blue- 3 mm Lingual and/or distal-Molars
- L-3IC Inverted Curved- Light Blue- 3 mm- General, Lingual and/or Distal
- L5C Curved Blade- Brown- 5 mm- Large molar roots-General use
- L5S Straight Blade-Yellow-5mm- Interproximal
- DE3 dual edge/straight grey 3 mm/1.5 mm
- DE5 dual edge/straight brown 5 mm/3 mm

Deep fractured/Decayed Roots

L5C